



v^{ar}SEQ[®]

VSReports & VSPipeline

Using Clinical Reports as Part of a Gene Panel Pipeline

July 13, 2016

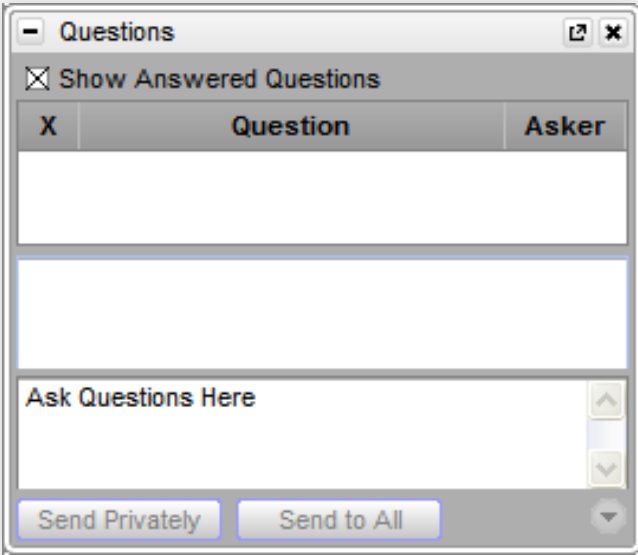
Hauwa Yusuf

Field Application Scientist

Questions During The Presentation



Use the Questions pane in your GoToWebinar window





1 Overview Golden Helix

2 VSPipeline

3 DEMO

4 Q & A

Golden Helix – Who We Are



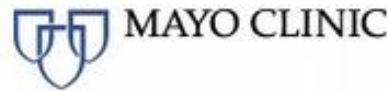
Golden Helix is a global bioinformatics company founded in 1998.



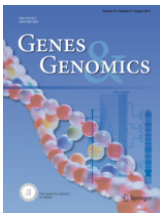
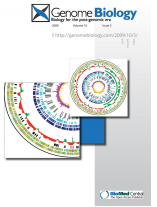
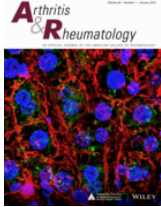
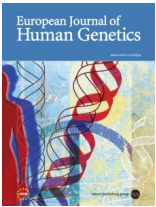
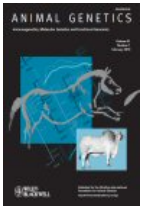
GWAS
Genomic Prediction
Large-N-Population Studies
RNA-Seq
CNV-Analysis

Filtering and Annotation
Clinical Reports
Pipeline
Data Warehousing

Over 300 customers globally



Cited in over 1000 peer-reviewed publications

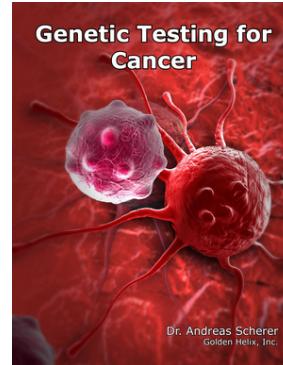


Golden Helix – Who We Are



When you choose a Golden Helix solution, you get more than just software

- REPUTATION
- TRUST
- EXPERIENCE



- INDUSTRY FOCUS
- THOUGHT LEADERSHIP
- COMMUNITY

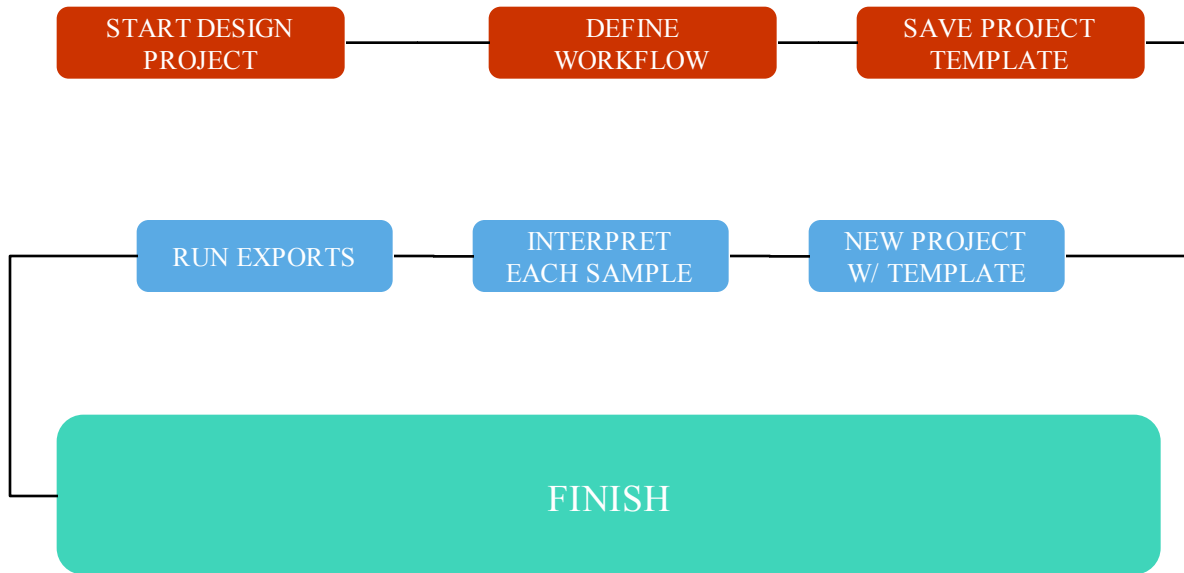
- TRAINING
- SUPPORT
- RESPONSIVENESS



- TRANSPARENCY
- INNOVATION and SPEED
- CUSTOMIZATIONS



Define a workflow that is Repeated for “Batches” of Samples



Design and Repeat

- Steps in **RED** are done once when designing a new workflow to be tuned to the upstream pipeline and test thresholds
- Steps in **BLUE** are done for each sample or set of samples that should repeat the workflow
- Steps in **BLUE** can be automated with **VSPipeline**



VSPipeline: High Throughput, Automated

■ Produce Automated “Deliverables”

- Filtered and annotated variant lists
- Exported to Excel, VCF, Text
- Clinical Report
- VarSeq Projects (openable by VarSeq, VarSeq Viewer)

■ Deploy a Project Template

- Support validation (like CAP/CLIA)
- All steps logged

■ Integrated

- Run as part of pipeline that produces BAM/VCF files.

```
grudy@linServerDev:~/scratch$ vspipeline -c batch file=panel_workflow.vsbatch
Loading...
Importing variants...
[0%] Starting...
[0%] Preparing source reader
[0%] Writing new file
[0%] Writing new file
[0%] Writing new file
[0%] Writing new file
[0%] Writing new file
[0%] Writing new file
[0%] Writing new file
[0%] Writing new file
[0%] Writing new file
[0%] Writing new file
[0%] Writing new file
[0%] Writing new file
[0%] Writing new file
[0%] Writing new file
[0%] Writing new file
[0%] Writing new file
[0%] Writing new file
[0%] Writing new file
[0%] Writing new file
[0%] Writing new file
[0%] Writing new file
[0%] Writing new file
[0%] Writing new file
[0%] Writing new file
[0%] Writing new file
[0%] Writing new file
[0%] Writing new file
[0%] Writing new file
[0%] Writing new file
[15%] Writing new file - About 10 Seconds remaining
[16%] Writing new file - About 10 Seconds remaining
[22%] Writing new file - About 10 Seconds remaining
[27%] Writing new file - About 10 Seconds remaining
[29%] Writing new file - About 10 Seconds remaining
[34%] Writing new file - About 10 Seconds remaining
[35%] Writing new file - About 10 Seconds remaining
[40%] Writing new file - Less than 10 Seconds remaining
[43%] Writing new file - Less than 10 Seconds remaining
[45%] Writing new file - Less than 10 Seconds remaining
```



- **Illumina MiniSeq TruSight Cancer Panel**
- **Lymphoma Association**
- **Oncogenes**
- **Tumor Suppressor Genes**
- **BAM and VCF files available**

Questions or More Info



- Email info@goldenhelix.com
- Request an evaluation of the software at www.goldenhelix.com



Questions?



Use the Questions pane in your GoToWebinar window

